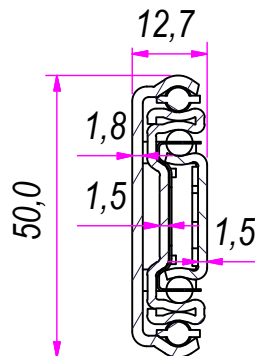
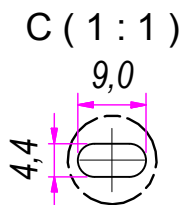
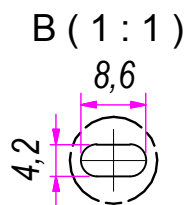
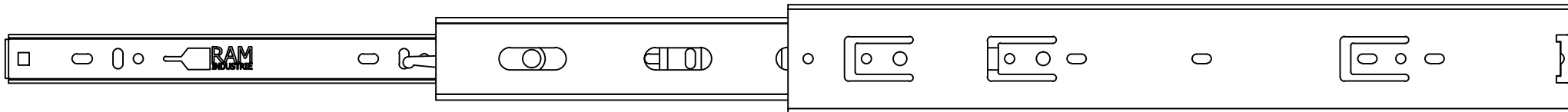


SEZ. A-A

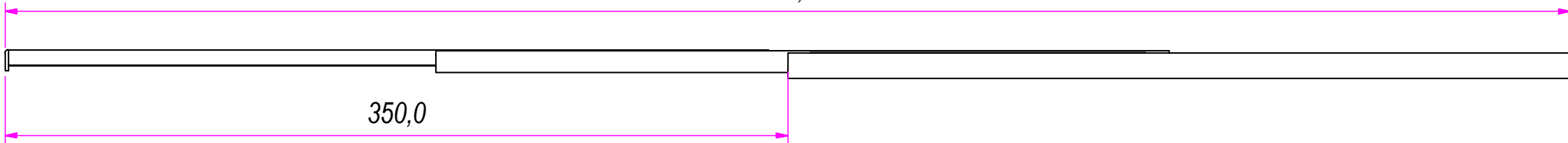


| | | | | |
|--|---------------------------------------|-------------------------------|--------------------|-----------------|
| DESIGNED BY F.Dino | CHECKED AND APPROVED BY L. Paleari | REVISION | DATE 10/06/2016 | CODE NE51350 |
| GENERAL TOLERANCE SS-ISO-2768-1M | | UNIT mm | SCALE | SHEET 1 of 2 |
| DESCRIPTION Black finishing (cataphoresis coating) | | MATERIAL Cold rolled steel | | |
| DEVICE Clip on bracket | | PAIR WEIGHT 1,396 Kg | 02C | |

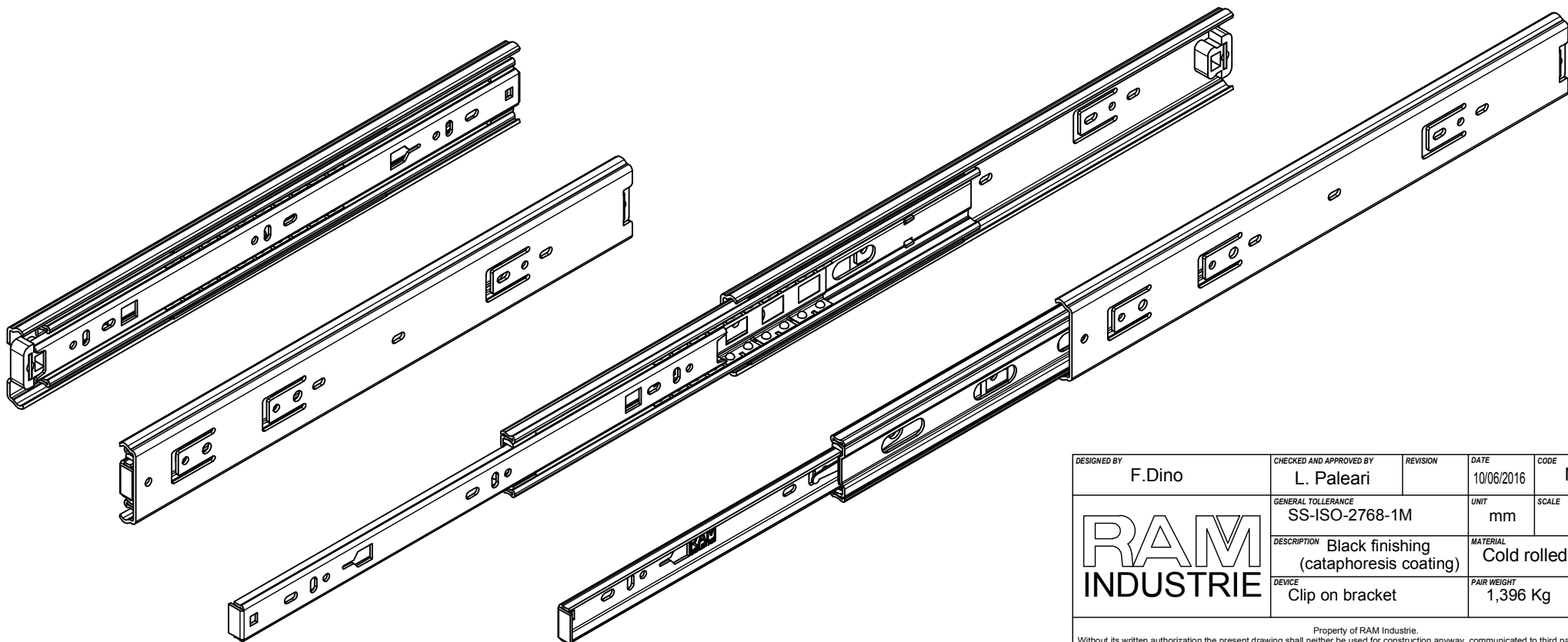
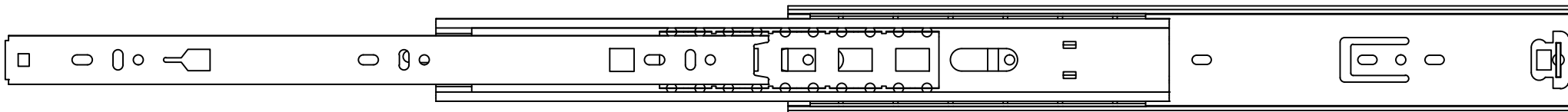
Property of RAM Industrie.
Without its written authorization the present drawing shall neither be used for construction anyway, communicated to third parties, nor reproduced.



700,0



350,0



| | | | | |
|--|---------------------------------------|-------------------------------|--------------------|-----------------|
| DESIGNED BY F.Dino | CHECKED AND APPROVED BY L. Paleari | REVISION | DATE 10/06/2016 | CODE NE51350 |
| GENERAL TOLLERANCE SS-ISO-2768-1M | | UNIT mm | SCALE | SHEET 2 of 2 |
| DESCRIPTION Black finishing (cataphoresis coating) | | MATERIAL Cold rolled steel | | |
| DEVICE Clip on bracket | | PAIR WEIGHT 1,396 Kg | 02C | |

Property of RAM Industrie.
Without its written authorization the present drawing shall neither be used for construction anyway, communicated to third parties, nor reproduced.