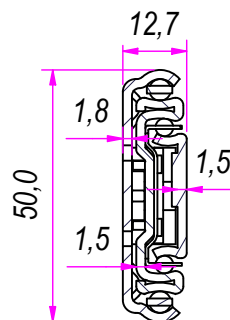
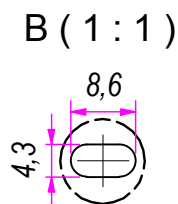
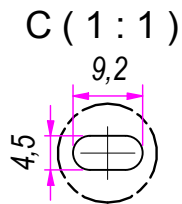



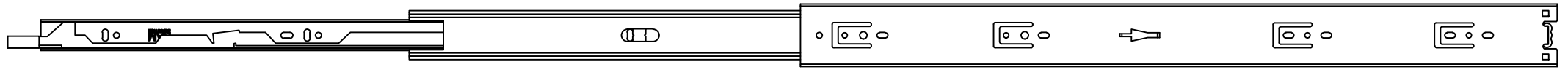
SEZ. A-A



Guide per cassetti; guide telescopiche	Coulisses à billes; coulisse télescopique	
Drawer slide; telescopic ball bearing slide	Guías para cajones; guía teleópica	
Kugelführung; Teleskopschienen		

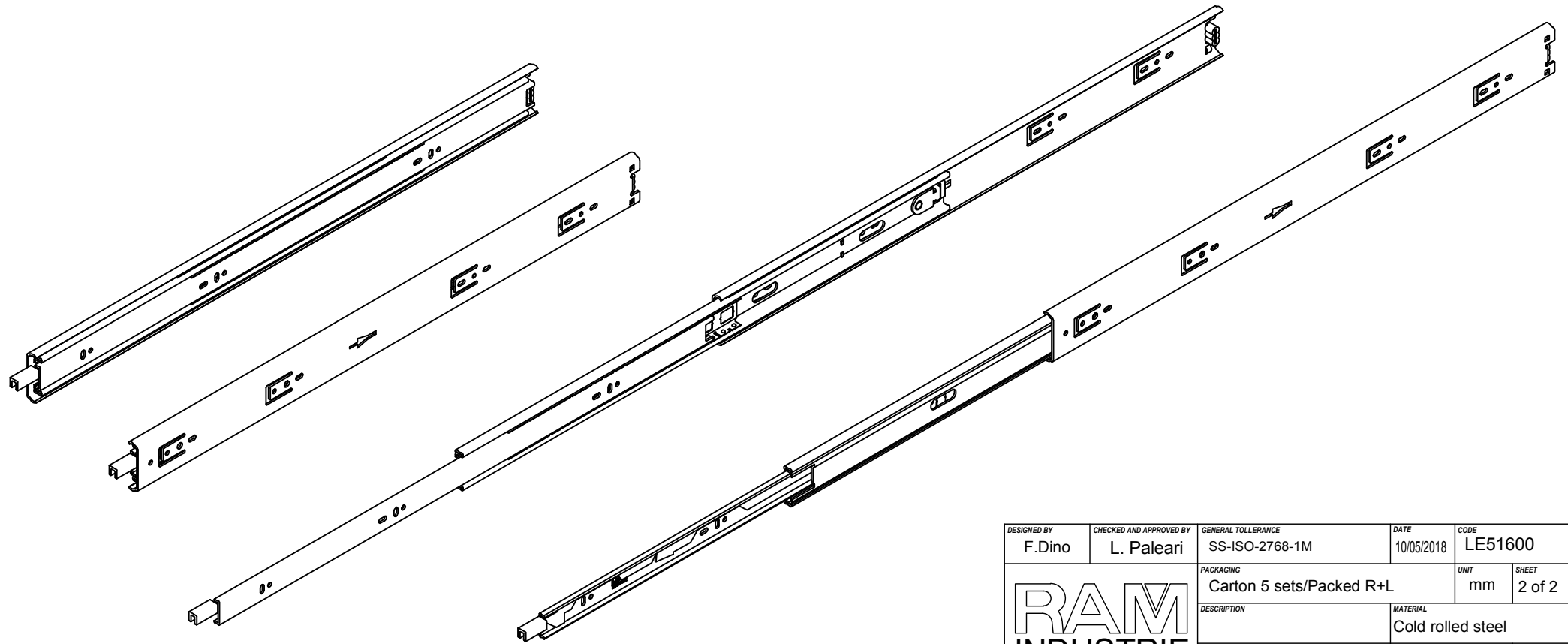
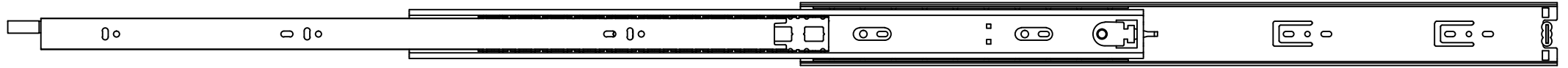
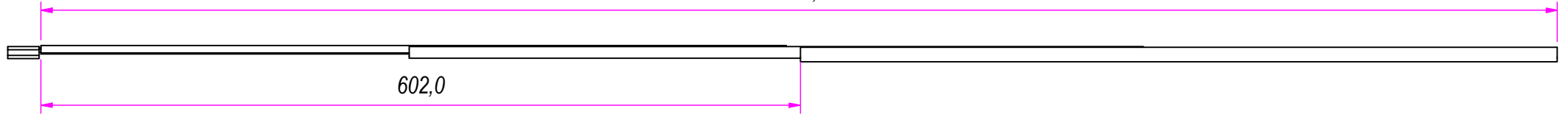
REVISION HISTORY	
REV	DESCRIPTION
1a	

DESIGNED BY F. Dino	CHECKED AND APPROVED BY L. Paleari	GENERAL TOLERANCE SS-ISO-2768-1M	DATE 10/05/2018	CODE LE51600
PACKAGING Carton 5 sets/Packed R+L			UNIT mm	SHEET 1 of 2
DESCRIPTION Lock-in and Lock-out			MATERIAL Cold rolled steel	
			PAIR WEIGHT 2,592 Kg	02C
				
<small>Property of RAM Industrie. Without its written authorization the present drawing shall neither be used for construction anyway, communicated to third parties, nor reproduced.</small>				



1202,0

602,0



DESIGNED BY F. Dino	CHECKED AND APPROVED BY L. Paleari	GENERAL TOLERANCE SS-ISO-2768-1M	DATE 10/05/2018	CODE LE51600
PACKAGING Carton 5 sets/Packed R+L			UNIT mm	SHEET 2 of 2
DESCRIPTION Lock-in and Lock-out			MATERIAL Cold rolled steel	
PAIR WEIGHT 2,592 Kg			02C	

RAM
INDUSTRIE

REVISION HISTORY		DESCRIPTION	DATE
REV	1a		10/05/2018

Guide per cassetti; guide telescopiche	Coulisses à billes; coulisse télescopique
Drawer slide; telescopic ball bearing slide	Guías para cajones; guía teleópica
Kugelführung; Teleskopschienen	

Property of RAM Industrie.
Without its written authorization the present drawing shall neither be used for construction anyway, communicated to third parties, nor reproduced.