


Cage with 16 ball bearings pairs

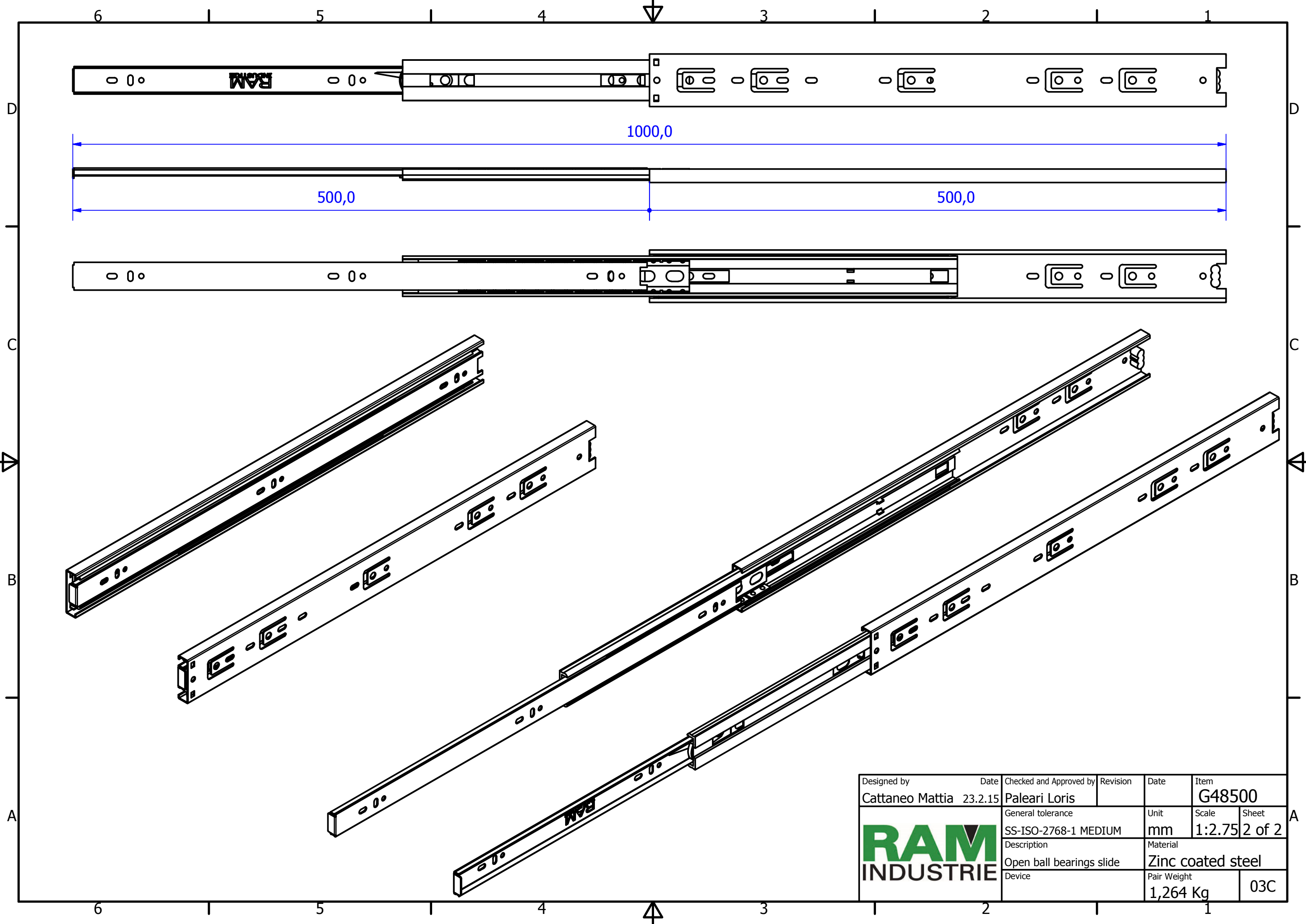
A-A (2 : 1)


B (2 : 1)

C (2 : 1)

REVISION HISTORY			
REV	DESCRIPTION	APPROVED BY	DATA
1	Slotted hole modified with hole (16-03)	F.Dino	22/09/2016
2	New thickness 1x1x1,2 (16-03)	F.Dino	22/09/2016

Designed by Cattaneo Mattia	Date 23.2.15	Checked and Approved by Paleari Loris	Revision	Date	Item G48500	
			General tolerance SS-ISO-2768-1 MEDIUM	Unit mm	Scale 1:1.5	
			Description Closed ball bearings slide	Material Zinc coated steel		
			Device	Pair Weight 1,264 Kg	Sheet 1 of 2	03C



Designed by Cattaneo Mattia	Date 23.2.15	Checked and Approved by Paleari Loris	Revision	Date	Item G48500
		General tolerance SS-ISO-2768-1 MEDIUM	Unit mm	Scale 1:2.75	Sheet 2 of 2
		Description Open ball bearings slide	Material Zinc coated steel		
		Device	Pair Weight 1,264 Kg	03C	