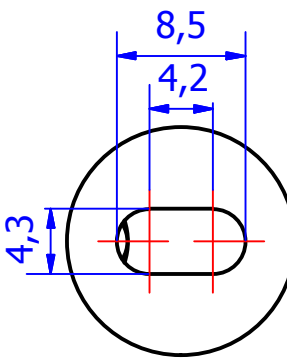
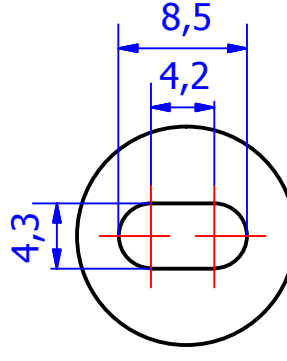


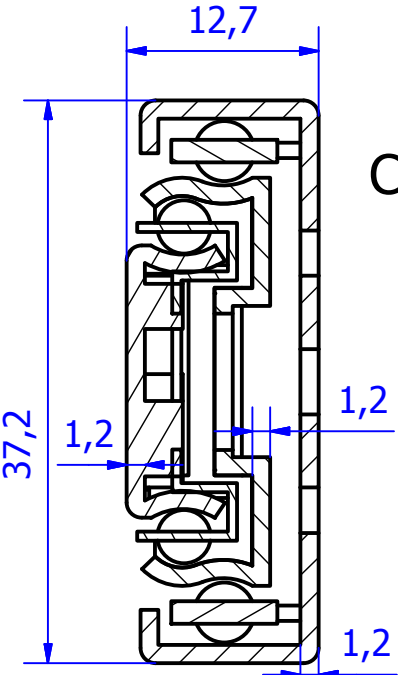
Cage with 14 ball bearings pairs



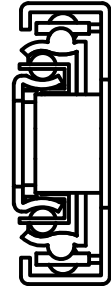
E (2 : 1)



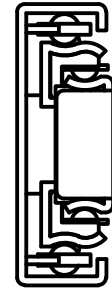
D (2 : 1)




C-C (2 : 1)

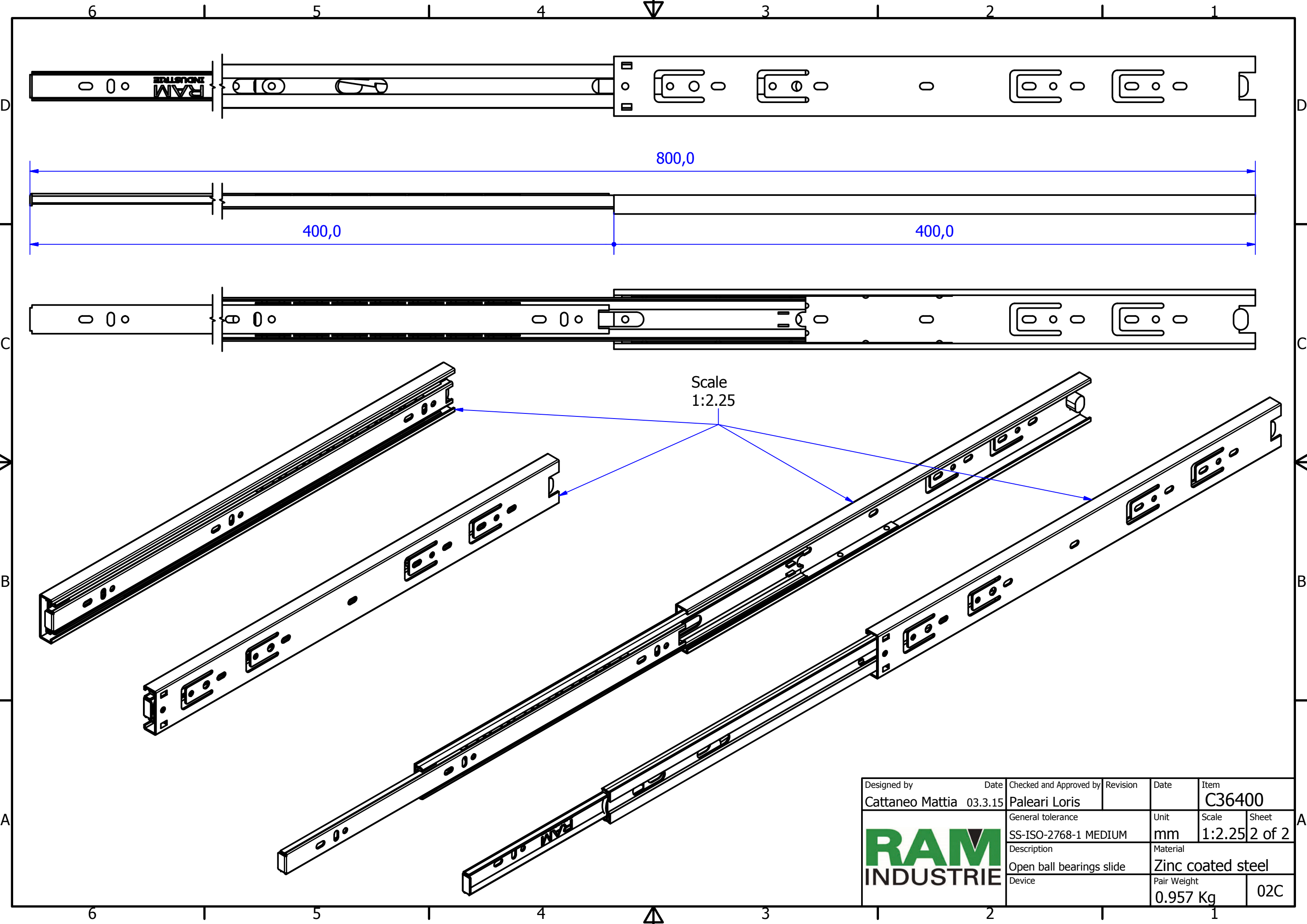


B (1 : 1)




A (1 : 1)

Designed by Cattaneo Mattia	Date 03.3.15	Checked and Approved by Paleari Loris	Revision	Date	Item C36400
			General tolerance SS-ISO-2768-1 MEDIUM	Unit mm	Scale 1:1.25
			Description Closed ball bearings slide	Material Zinc coated steel	Sheet 1 of 2
Device				Pair Weight 0.957 Kg	02C



Scale
1:2.25

Designed by Cattaneo Mattia	Date 03.3.15	Checked and Approved by Paleari Loris	Revision	Date	Item C36400
		General tolerance SS-ISO-2768-1 MEDIUM	Unit mm	Scale 1:2.25	Sheet 2 of 2
		Description Open ball bearings slide	Material Zinc coated steel		
Device		Pair Weight 0.957 Kg	02C		