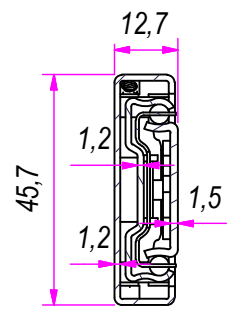
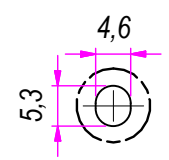


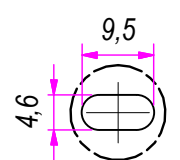
SEZ. A-A



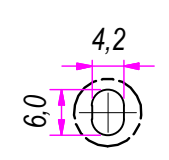
B (1:1)



C (1:1)

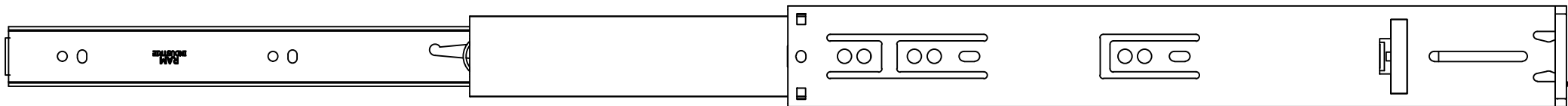


D (1:1)

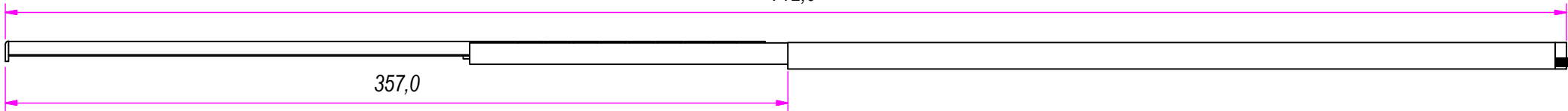


| | | | | |
|------------------------------|----------------------------------------------|------------------------------------------------|-------------------------------|--------------------------|
| DESIGNED BY F.Dino | CHECKED AND APPROVED BY L. Paleari | REVISION | DATE 18/05/2016 | CODE 60350 |
| | | GENERAL TOLLERANCE SS-ISO-2768-1M | UNIT mm | SCALE SHEET 1 of 2 |
| | | DESCRIPTION Self closing with double-spring | MATERIAL Cold rolled steel | |
| DEVICE | | PAIR WEIGHT 1,008 Kg | 03T | |

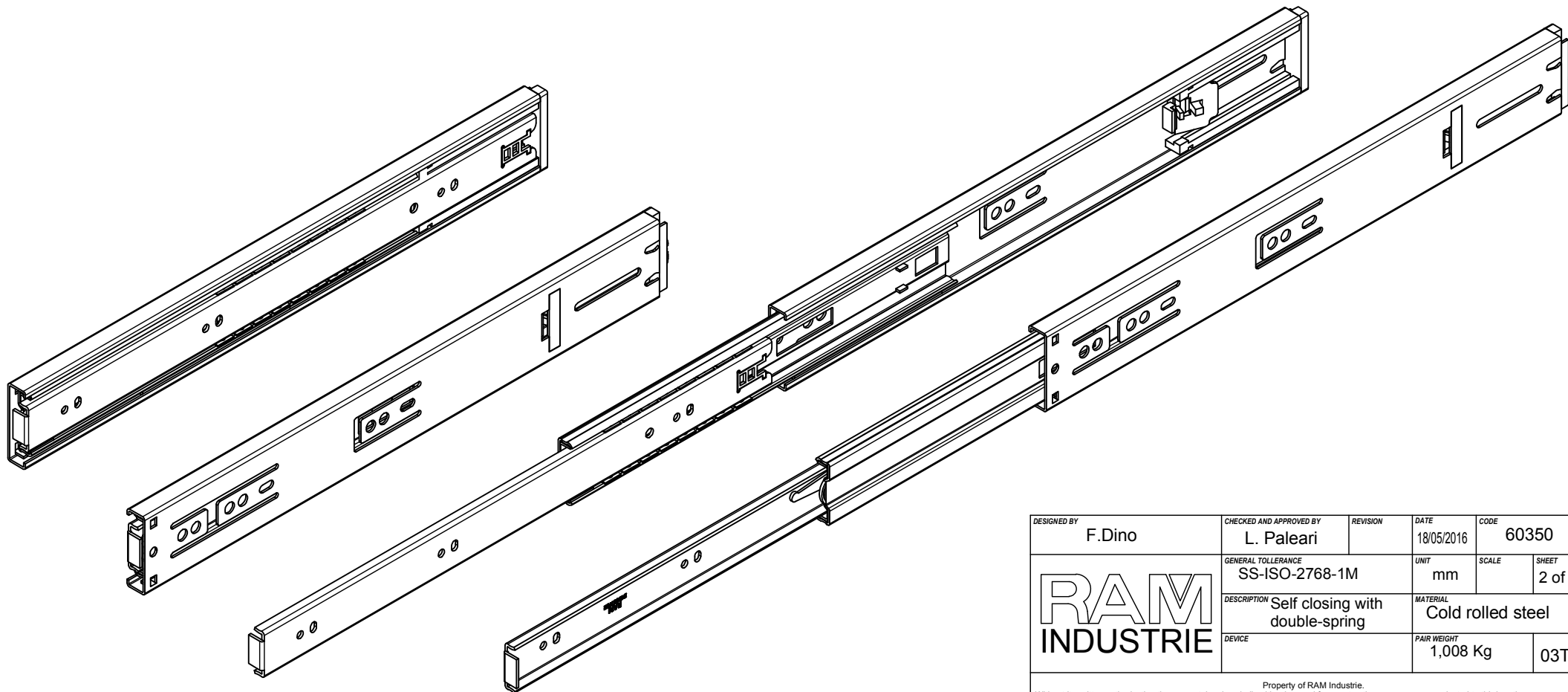
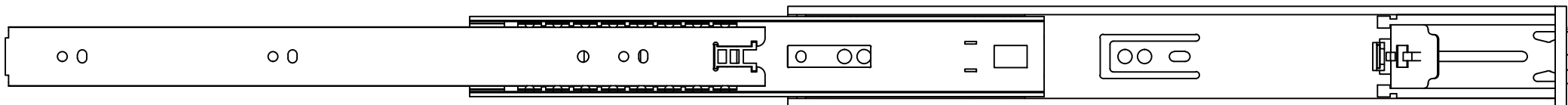
Property of RAM Industrie.
Without its written authorization the present drawing shall neither be used for construction anyway, communicated to third parties, nor reproduced.




712,0



357,0



| | | | | |
|---------------------------------------------------------------------------------------|---------------------------------------|------------------------------------------------|-------------------------------|--------------------------|
| DESIGNED BY F.Dino | CHECKED AND APPROVED BY L. Paleari | REVISION | DATE 18/05/2016 | CODE 60350 |
|  | | GENERAL TOLLERANCE SS-ISO-2768-1M | UNIT mm | SCALE SHEET 2 of 2 |
| | | DESCRIPTION Self closing with double-spring | MATERIAL Cold rolled steel | |
| DEVICE | | PAIR WEIGHT 1,008 Kg | 03T | |

Property of RAM Industrie.
Without its written authorization the present drawing shall neither be used for construction anyway, communicated to third parties, nor reproduced.