


Cage with 16 ball bearings  
Cage with 14 ball bearings

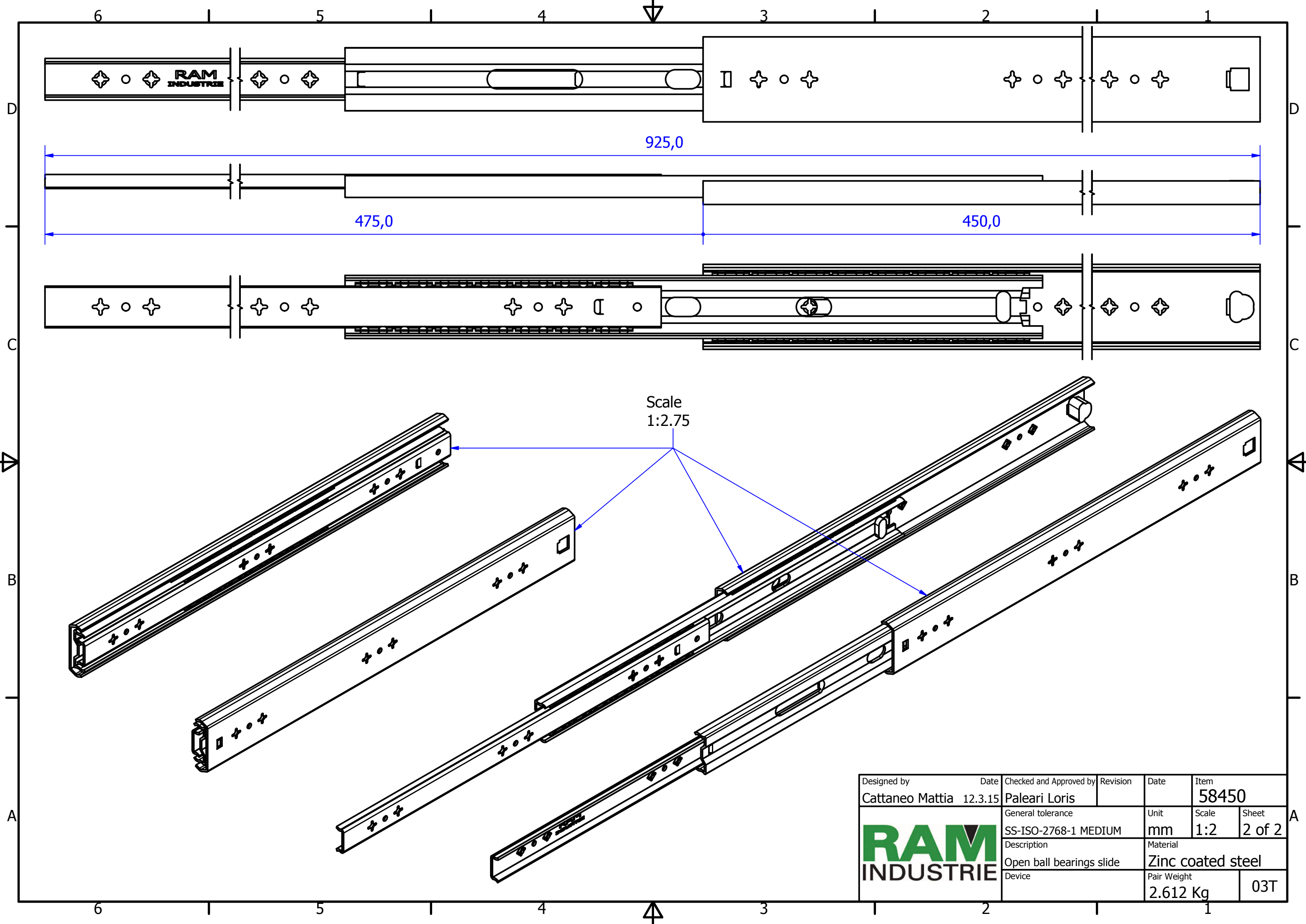
D (2 : 1)

A ( 1.5 : 1 )


B ( 1.5 : 1 )

C-C ( 1.5 : 1 )

Designed by Cattaneo Mattia	Date 12.3.15	Checked and Approved by Paleari Loris	Revision	Date	Item 58450
			General tolerance SS-ISO-2768-1 MEDIUM	Unit mm	Scale 1:1.5
			Description Closed ball bearings slide	Material Zinc coated steel	Sheet 1 of 2
Device				Pair Weight 2.612 Kg	03T



Scale  
1:2.75

Designed by Cattaneo Mattia	Date 12.3.15	Checked and Approved by Paleari Loris	Revision	Date	Item 58450
		General tolerance SS-ISO-2768-1 MEDIUM	Unit mm	Scale 1:2	Sheet 2 of 2
		Description Open ball bearings slide	Material Zinc coated steel		
Device		Pair Weight 2.612 Kg	03T		