

Cage with 28 ball bearings


A (1 : 1)

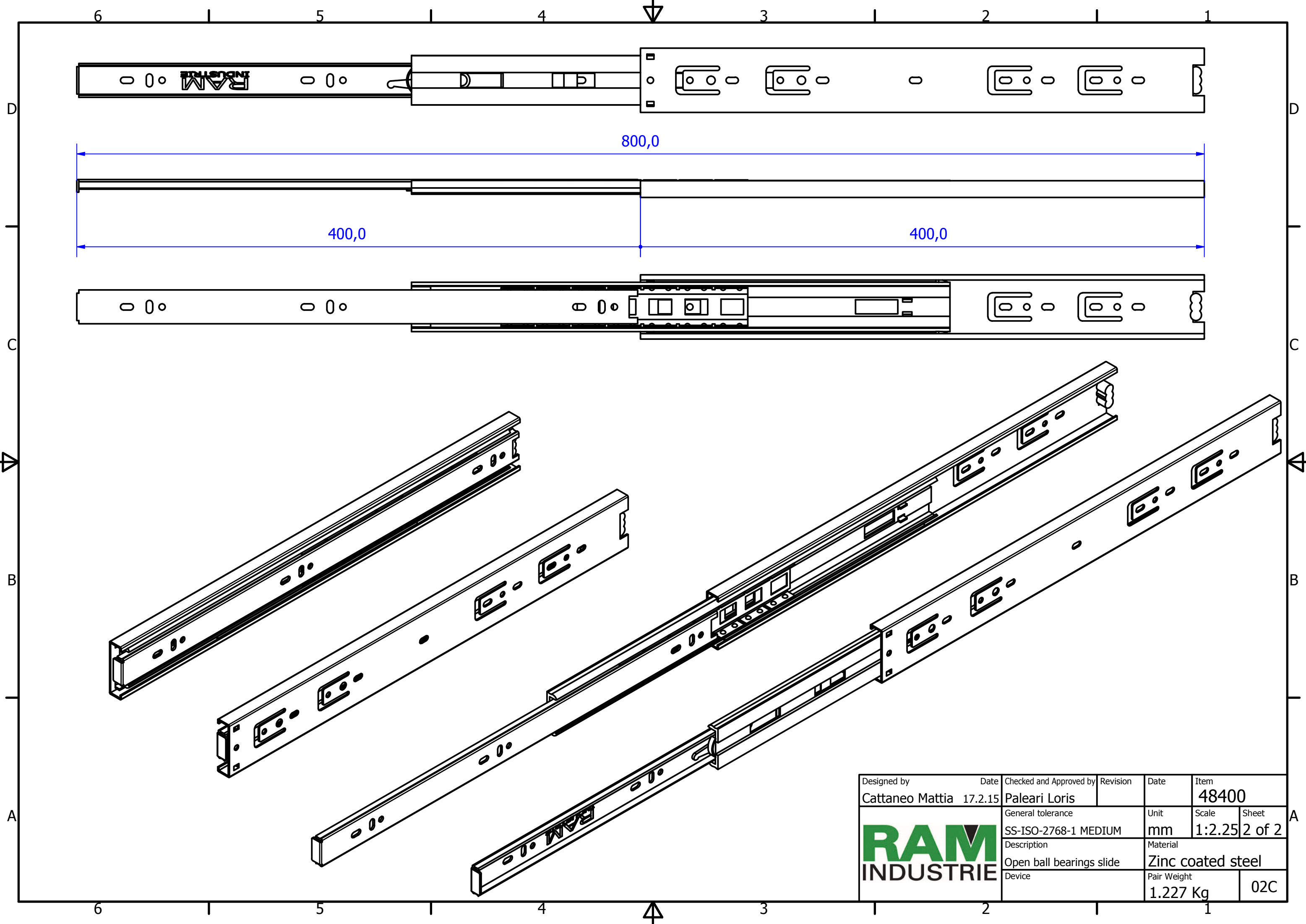
B (1 : 1)


C-C (2 : 1)

E (2 : 1)

D (2 : 1)

Designed by Cattaneo Mattia	Date 17.2.15	Checked and Approved by Paleari Loris	Revision	Date	Item 48400
			General tolerance SS-ISO-2768-1 MEDIUM	Unit mm	Scale 1:1.25
			Description Closed ball bearings slide	Material Zinc coated steel	Sheet 1 of 2
Device				Pair Weight 1.227 Kg	02C



Designed by Cattaneo Mattia	Date 17.2.15	Checked and Approved by Paleari Loris	Revision	Date	Item 48400
		General tolerance SS-ISO-2768-1 MEDIUM	Unit mm	Scale 1:2.25	Sheet 2 of 2
		Description Open ball bearings slide	Material Zinc coated steel		
		Device	Pair Weight 1.227 Kg	02C	