
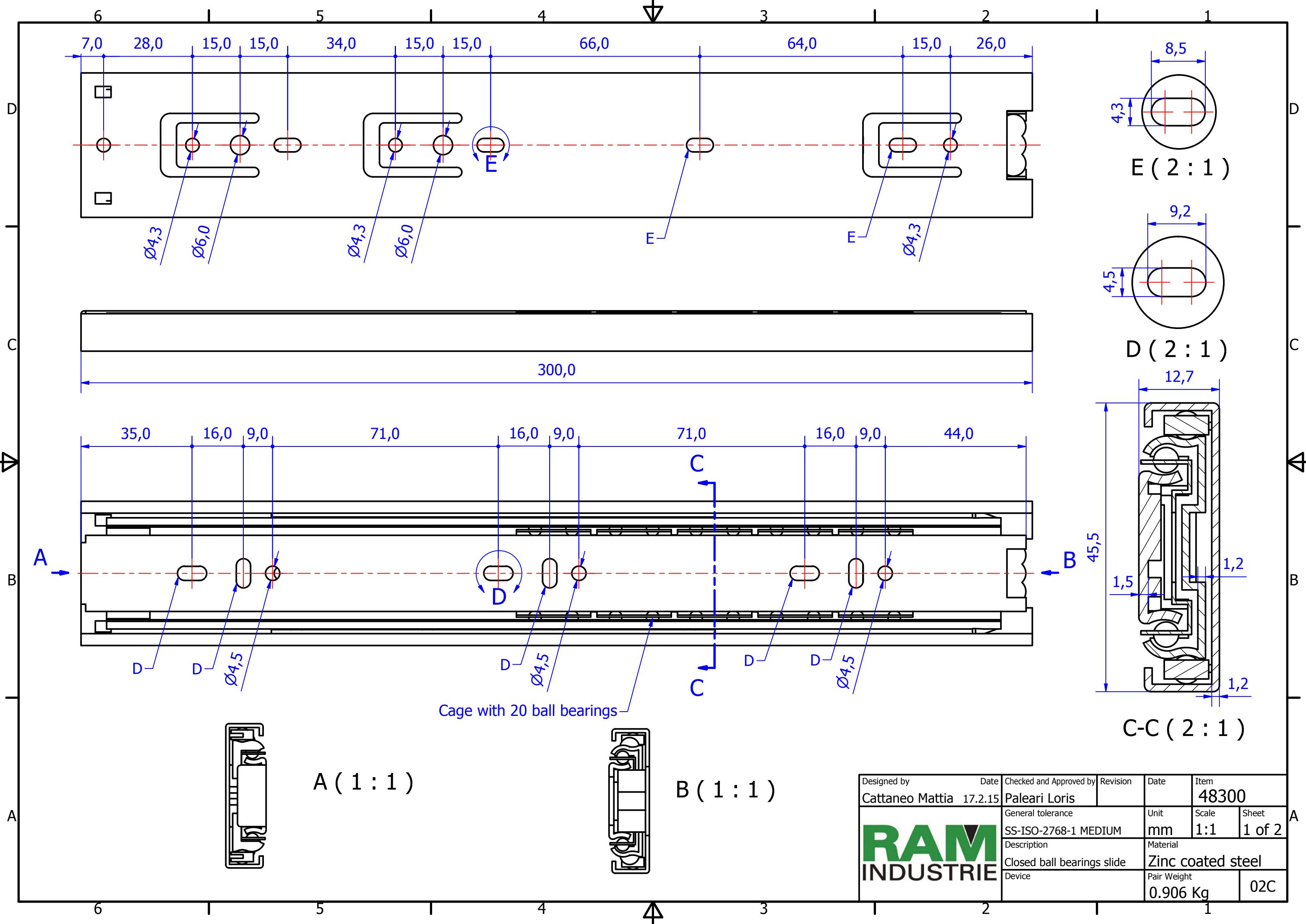



Designed by Cattaneo Mattia	Date 17.2.15	Checked and Approved by Paleari Loris	Revision	Date	Item 48300
		General tolerance SS-ISO-2768-1 MEDIUM	Unit mm	Scale 1:1.75	Sheet 2 of 2
		Description Open ball bearings slide	Material Zinc coated steel		Pair Weight 0.906 Kg



Designed by Cattaneo Mattia	Date 17.2.15	Checked and Approved by Paleari Loris	Revision	Date	Item 48300
			General tolerance SS-ISO-2768-1 MEDIUM	Unit mm	Scale 1:1
			Description Closed ball bearings slide	Material Zinc coated steel	Sheet 1 of 2
Device				Pair Weight 0.906 Kg	02C