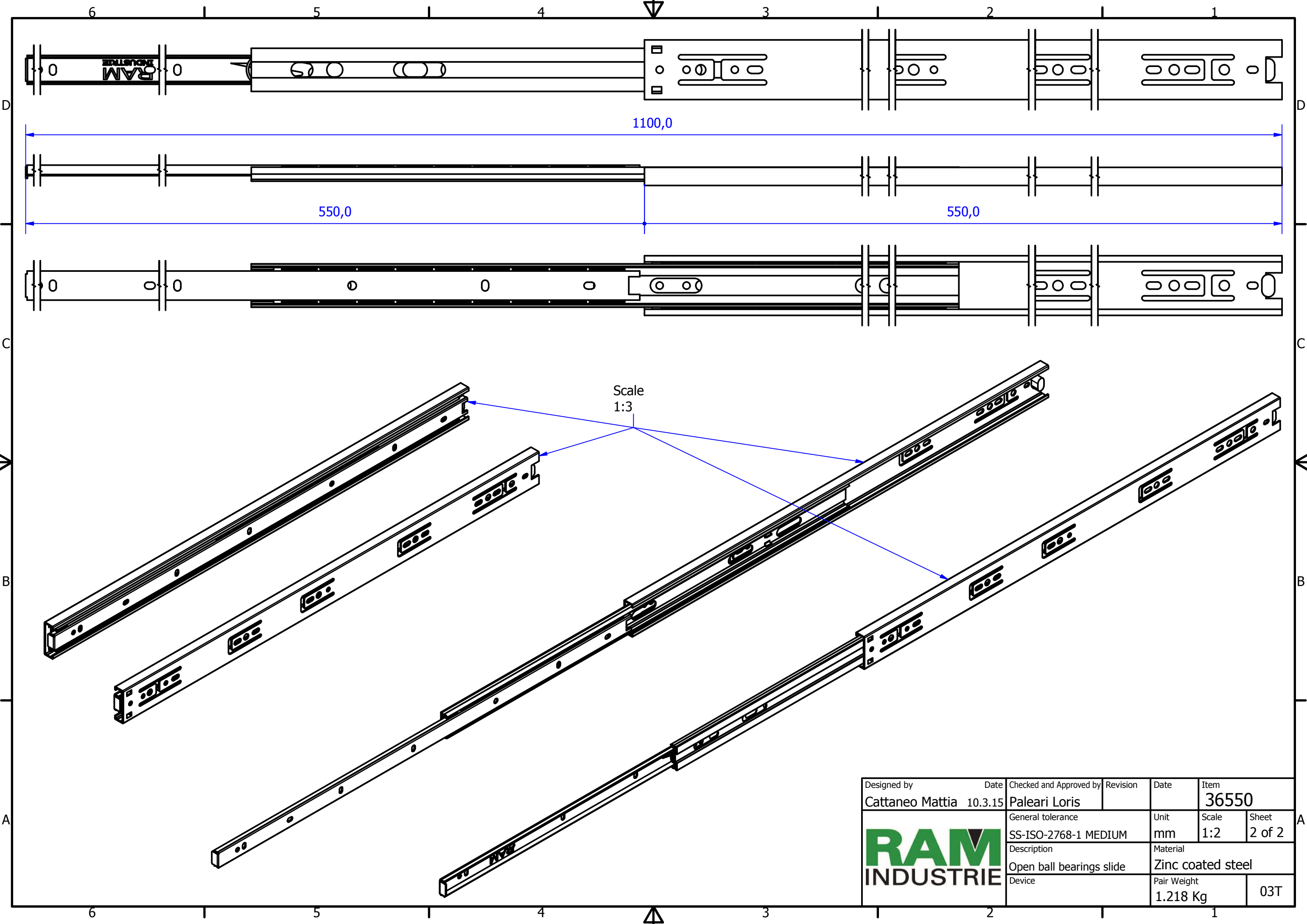



Designed by Cattaneo Mattia	Date 10.3.15	Checked and Approved by Paleari Loris	Revision	Date	Item 36550
		General tolerance SS-ISO-2768-1 MEDIUM		Unit mm	Scale 1:1.5
		Description Closed ball bearings slide		Material Zinc coated steel	
Device				Pair Weight 1.218 Kg	03T



Scale
1:3

Designed by Cattaneo Mattia	Date 10.3.15	Checked and Approved by Paleari Loris	Revision	Date	Item 36550
		General tolerance SS-ISO-2768-1 MEDIUM		Unit mm	Scale 1:2
		Description Open ball bearings slide		Material Zinc coated steel	
Device		Pair Weight 1.218 Kg		03T	